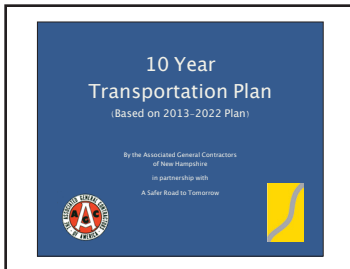


# A SAFER ROAD TO TOMORROW

January 2012 Newsletter

## Proposed 2013-2022 Ten Year Plan Financially Responsible



A Safer Road to Tomorrow coalition partner, the Associated General Contractors of New Hampshire (AGC of NH), recently analyzed the 2013-2022 Ten Year Transportation Plan to see how projected construction matches with projected revenue. Overall, the plan portrays a realistic picture of what can be accomplished with the available revenue. However, there is a significant amount of bonding in the plan, which will have a reducing effect on future revenue. To

provide a benchmark for comparison, AGC of NH also looked at a past analysis of the 2007-2016 Ten Year Plan, and performed the same analysis on the 2011-2020 Ten Year Plan.

The analysis began by comparing “phase totals” of each Ten Year Plan. The “phase totals” establish the different categories that are funded through the plan. The following chart shows the “phase totals” of the three plans:

	Construction	Engineering	Rights of Way	Misc.	Total
2007	2,813.654	271.235	226.259	240.288	3,551.436
2011	2,841.628	210.663	119.937	447.584	3,619.812
2013	2,299.195	148.323	108.446	420.963	2,976.923

\* Numbers are in millions

The chart shows that projected construction for the 2013 Ten Year Plan is lower than the previous two years analyzed. AGC of NH believes that this shows a more realistic picture of what construction work is available. For example, upon completing the analysis of the 2007 Ten Year Plan in 2005, AGC of NH found that it was over-programmed (more construction than revenue available to fund) by about 30%-38%. In light of this, AGC of NH recommended that cuts be made to future plans to better reflect what construction projects can reasonably be completed. However, construction in the 2011 Ten Year Plan was higher than in the 2007 Ten Year Plan. AGC of NH believes that this could be because of remaining stimulus funds, and an increase in revenue from the registration fee surcharge enacted in 2009. The 2013 Ten Year Plan does not have either of those revenue sources, leading to a decreased construction total.

AGC of NH surmises that the 2013-2022 Ten Year Plan provides a similar amount of construction work (approximately \$180 million) as was provided in 2008-2009. The Association cautions that the projected construction work is dependent on receiving the projected revenue. Furthermore, New Hampshire's infrastructure cannot sustain additional Ten Year Plans that follow the same trend of less construction projects and reduced revenue.

The analysis was sent to the Executive Council, the Governor, and key legislators to provide a reference tool as they review and amend the Ten Year Plan. The complete analysis (2007-2016, 2011-2020, and 2013-2022), along with an Executive Summary highlighting the major findings, is available on the Safer Roads website, [www.saferoadsnh.com](http://www.saferoadsnh.com), under “Publications” and then under “Other Media.”



A SAFER ROAD  
TO TOMORROW

*Safety · Quality of Life · Economic Development*

48 Grandview Road, Bow, NH 03304  
Phone: 603.225.2701 Fax: 603.226.3859  
Email: [info@saferoadsnh.com](mailto:info@saferoadsnh.com)  
Web: [www.saferoadsnh.com](http://www.saferoadsnh.com)

## Safer Road Partners

### Associated General Contractors of NH

The Associated General Contractors is a non-profit trade organization of general contractors, subcontractors, and industry professionals dedicated to improving industry standards.

### NH Good Roads Association

NH Good Roads Association is a non-profit trade organization established to encourage the development of a safe, efficient and environmentally sound highway transportation system.

### Safety and Health Council of Northern New England

The Council's mission is to educate and promote safety & health policies, practices and procedures that prevent and mitigate human economic losses arising from unintended causes.

### NH Association of Chiefs of Police

The Association secures a closer relationship among commanding officers all over the state, to encourage a cooperative relationship among all police officials.

### NH Lodging & Restaurant Association

The Association is a non-partisan organization to promote, protect and educate the food service and lodging industries and to ensure positive business growth for our members.

### Business & Industry Association

The Association is NH's leading business trade association. It advocates for business interests with state and federal legislators and regulators.

## DOT Provides Winter Driving Tips for New Hampshire

The New Hampshire State Police, Department of Transportation, and Department of Environmental Services would like motorists to begin thinking differently about how motorists drive in winter conditions. Winter driving can be difficult, even for the most experienced drivers, and it is important to be prepared for the winter conditions.

The following is a list of tips for driving in winter conditions:

- Prepare your vehicle by installing snow tires and an “emergency kit” that may include jumper cables, a flashlight, a folding shovel, rock salt, a first aid kit, emergency flares, and a blanket.
- Avoid driving during winter storms if possible. Drive more slowly in anticipation of slippery conditions, even if the roads do not appear to be slippery. Leave more room to stop safely, a four-wheel drive vehicle will not help you stop more quickly.
- Salting and plowing continue to be the best tools available to clear the roads, but they need time to have any effect on the driving conditions. If you notice slippery conditions, please slow down and be assured that crews are working to clear all roads as soon as practical.
- On the interstates and turnpikes, you may encounter “tandem plowing.” That’s when several plow trucks operate across all travel lanes to efficiently clear the highway. For everyone’s safety, don’t attempt to pass the plows, and please allow extra room behind the plows.

A final note of caution comes from Department of Transportation Commissioner, Christopher Clement, “Please respect road crews and State and local police while they are doing their jobs, and particularly during winter storms. They are out there in the worst conditions, putting their lives on the line for your safety.”

## New Hampshire’s Bridges Remain Among the Worst in the Nation

Better Roads Magazine has again ranked New Hampshire’s bridges among the worst in the nation according to their 2011 Better Bridge Inventory. For the past five years in a row, approximately 30% of New Hampshire State and Interstate bridges have remained structurally deficient or functionally obsolete. Structurally deficient (SD) bridges are restricted to light vehicles only, are closed, or require immediate rehabilitation to remain open. A functionally obsolete (FO) bridge is one in which the deck geometry, load carrying capacity (comparison of the original design load to the state legal load), clearance, or approach roadway alignment no longer meets the usual criteria for the system.

While the state has taken measures to improve the bridges, several factors limit their ability to significantly reduce the number of SD/FO bridges. Environmental regulations continue to be a major time delay for projects, and lack of adequate funding limits the number of bridges that can be repaired each year. Funding is an issue on both the federal and state level. The expiration of SAFETEA-LU in 2009 has left federal funds in limbo for the past two years. Now with different proposals in both the U.S. House and U.S. Senate, reauthorizing transportation funding will be difficult. Additionally, New Hampshire lost a Highway Trust Fund revenue source when the registration fee surcharge enacted in 2009 was allowed to sunset. The charts below compare New Hampshire’s bridges with the rest of New England. The rankings come from a comparison of all 50 states plus the District of Columbia and go from least percentage of SD/FO bridges to the highest percentage of SD/FO bridges.

### Interstate and State Bridges

State	Total Interstate & State Bridges	Total SD/FO	%	Rank
Maine	2084	534	26%	36
N. Hampshire	1503	326	22%	32
Vermont	1081	286	26%	40
Massachusetts	3559	1252	35%	46
Connecticut	2941	1079	37%	47
Rhode Island	607	296	49%	50

### Municipal Bridges

State	Total Municipal Bridges	Total SD/FO	%	Rank
Maine	217	80	37%	44
N. Hampshire	981	410	42%	47
Vermont	1612	516	32%	36
Massachusetts	1554	541	35%	39
Connecticut	1243	423	34%	38
Rhode Island	144	75	52%	49

### Combined State & Municipal

State	Total All Bridges	Combined Total SD/FO	%	Rank
Maine	2301	614	27%	33
N. Hampshire	2484	736	30%	41
Vermont	2693	802	30%	42
Massachusetts	5113	1793	35%	45
Connecticut	4184	1502	36%	46
Rhode Island	751	371	49%	50

## A Safer Road to Tomorrow Releases 2012 Calendar

The A Safer Road to Tomorrow coalition has released its 2012 Calendar. The 2012 Calendar takes a different approach than past issues by showing how New Hampshire uses its infrastructure, rather than roads and bridges in need of repair. Citizens rely on the infrastructure day in and day out to take them to work, school, errands, appointments, and more. It is the framework that connects all aspects of our everyday life.

With travel destinations, restaurants, and other businesses depending on the infrastructure to carry their goods and bring in customers, it is important to keep the system maintained. Efficient delivery routes means lower prices can be passed onto the consumer. Tourists can move through the state easily, enjoying the scenic byways of the North, Lakes Region, Seacoast, and beyond.

Looking at the role infrastructure plays in your life is the first step to understanding the importance of the system. Without our modern-day system, delivery times would be at least twice as long. Gone would be family road trips and day trips to the beach or other area attractions. Buying local produces, meats, and other products would be difficult. Bottom-line, today's system is a key factor in the quality of life in New Hampshire.

The coalition encourages you to view the calendar, and better understand the importance of our infrastructure. The calendar is available on the A Safer Road to Tomorrow website at [www.saferoadsnh.com](http://www.saferoadsnh.com) under "Publications" and then under "Calendars."



**"Over 80% of all trips in 2010 in NH were made using the visitor's own auto/truck."**

**- NH Division of Travel & Tourism**

**\*Photo taken: Rest Area, Hooksett, NH**



**There are over thirty hospitals in NH. Patients rely on ambulatory services to transport them to these hospitals in emergency situations.**

**\*Photo taken: Manchester, NH**



**"In fall 2010, there were 194,022 students enrolled in NH public schools in grades pre-kindergarten through 12th grade."**

**- NH Department of Education**

**\*Photo taken: Londonderry, NH**

## State Leaders Start Building America's Future New Hampshire Chapter

A bipartisan coalition of state leaders has formed a New Hampshire chapter of Building America's Future. Building America's Future was established by former Pennsylvania Governor Edward Rendell, former California Governor Arnold Schwarzenegger, and New York City Mayor Michael Bloomberg. The organization focuses on supporting and encouraging smart investments in our infrastructure.

The New Hampshire chapter follows this mission, and believes that our crumbling infrastructure has a dramatic affect on our economy. New Hampshire has lost its competitive edge when attracting new businesses and new jobs. The chapter supports the following initiatives:

- Promote Reforms and Accountability
- Focus Investments on Economic Returns
- Provide a National Plan, but with Local Flexibility

Most recently, the New Hampshire chapter promoted the mission with a television advertisement, which ran during WMUR News 9 broadcasts. The video is available on YouTube, <http://www.Youtube.com/InvestNewHampshire>.

For more information on Building America's Future and the New Hampshire chapter, go to <http://www.bafuture.org/outreach/nh>.

## New Hampshire May Set New Fatality Record For 2011

2011 may prove to be a record-setting year for lowest fatalities in New Hampshire. Peter Thompson, NH Highway Safety Agency Coordinator, recently told the *Eagle Tribune* that as of November 9, the highway death toll was at 69. That is compared with 116 deaths at the same time last year. 2009 was previously the lowest year for highway fatalities with 110 recorded deaths. 2010 saw an increase with 128 recorded highway-related deaths.

Thompson attributes the low fatality rate to the efforts of the Department of Safety and State Police Department. In 2011 they began a "Commute with Care" campaign that includes messages to motorists reminding them to drive safely and cautiously as well as increased enforcement efforts to combat distracted driving and speeding.



A Safer Road to Tomorrow  
48 Grandview Road  
Bow, NH 03304

**FEEDBACK** Reprinted from Luntz, Maslansky Strategic Research, 2009

**Over 90%** of Americans believe  
that investing in infrastructure should be a priority.

**FEEDBACK** Reprinted from Progressive Policy Institute, 2009

**Did you know...** The United States spends less than China and Europe on infrastructure.

Brought to you by the Safer Roads Partners:



Safety & Health Council  
of Northern New England